

Brief Introduction of SEPLOS Smart BMS V16

The V16 SEPLOS Smart BMS R&D was start since 2019. After 2 years of testing, updating, then testing, updating again cycles of SEPLOS engineers, and a real application senario testing of part of our customers. SEPLOS V16 Smart BMS is finally here.

The V16 BMS features the same size, and a little appearance difference, compared with the old version. But we made the RJ45 ports both CAN and RS485 compatible in one single board. The new version BMS communicate with multi-brands (more than 20 brands) of inverters. And also some extra functions added for options, like bluetooth, dry point, DIP address auto-distribution etc,.

Basic Functions

| No | Functions |
|----|----------------------------------|
| 1 | Single cell over voltage trip |
| 2 | Pack over voltage trip |
| 3 | Single cell low voltage trip |
| 4 | Pack low voltage trip |
| 5 | High temperature trip (charging) |
| 6 | Low temperature trip (charging) |

| | |
|----|---------------------------------------|
| 7 | High temperature trip (discharging) |
| 8 | Low temperature trip (discharging) |
| 9 | High temperature trip (ambient) |
| 10 | Low temperature trip (ambient) |
| 11 | High temperature trip (MOSFET) |
| 12 | Precharge |
| 13 | Charging current limiting |
| 14 | Over current trip (charging) |
| 15 | Over current trip (discharging) |
| 16 | Transient over current trip |
| 17 | Short circuit trip |
| 18 | SOC monitoring and trip |
| 19 | Equalization (Passive equalization) |
| 20 | Standby |
| 21 | In parallel |
| 22 | Parameters and settings configuration |
| 23 | History data record |

Optional functions

| | |
|---|-----------------------|
| 1 | External power switch |
| 2 | LCD Screen |
| 3 | Heating |
| 4 | Charging activation |

V16 BMS features

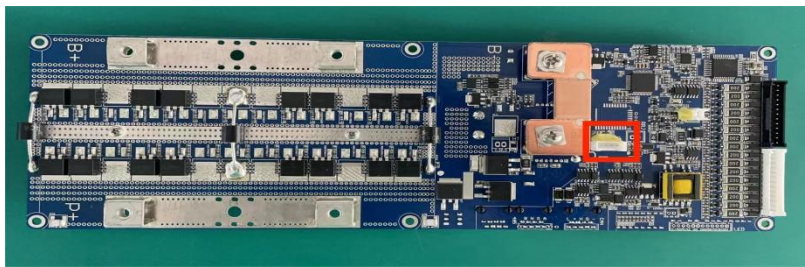
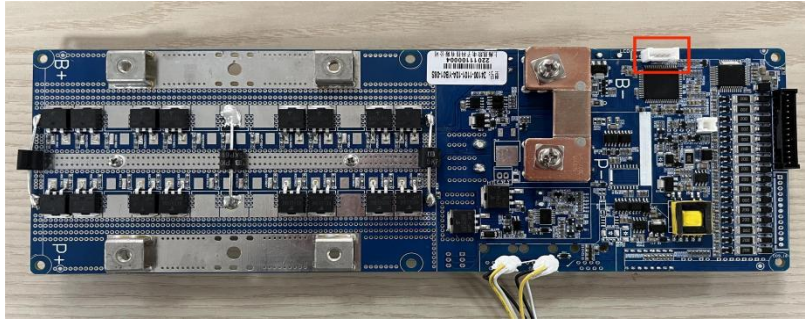
- The RJ45 communication ports compatible both CAN and RS485
- Pre-reserve connector for external boards
- Dry point (optional)
- LCD005/LCD004 with Bluetooth available
- Automatic identification in parallel
- Current limiting with higher voltage bearing
- Meet CE/CB standards
- When no loads was connected, No current flow even the temperature increases

CAN protocol list and corresponding compatible inverters

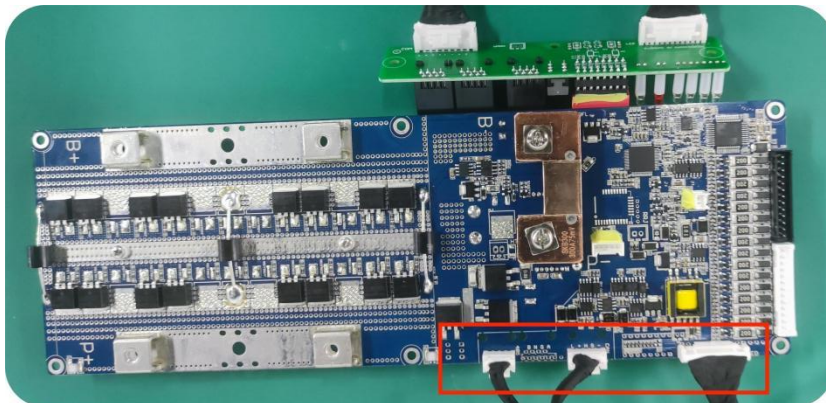
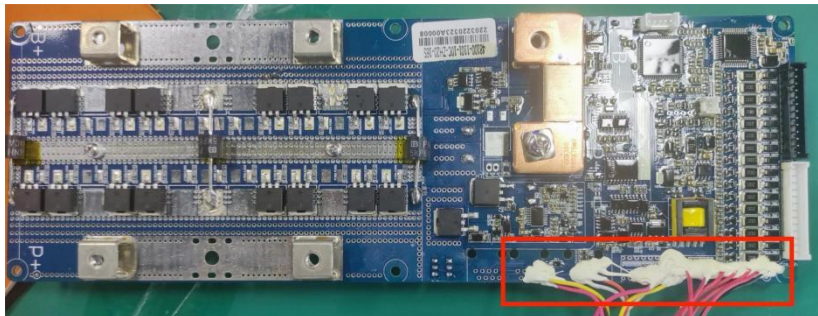
| | |
|---------|--|
| PN-GDLT | Pylontech, Goodwe, Deye, Luxpower, TBB |
| GRWT | Growatt SPF/SPH series |
| VCTR | Victron |
| SMA-SF | SMA, Sofar |
| GINL | Solis |
| Studer | Studer |

V16 BMS appearance difference

1. LCD screen connector location



2. Pre-reserved connector instead of soldering point for external board



3. DIP address distribution diagram

