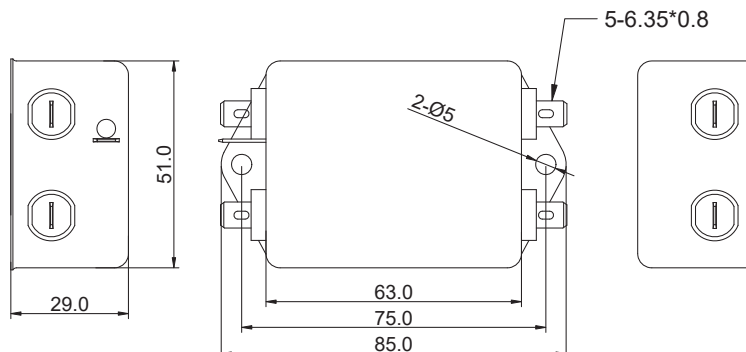




# DATASHEET

## EMI Filter

Item no.: 2617987



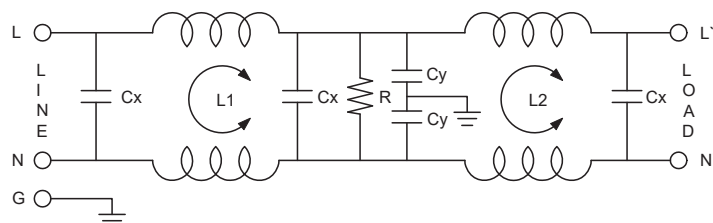
All measurements in mm

### Technical data

#### Characteristics

- Voltage rating..... 115/250 V/AC
- Operating frequency..... 50/60 Hz
- Current rating..... max. 10 A RMS
- Leakage current..... each line to ground @ 250 VAC/50 Hz, max. 1.0 mA
- Hipot rating (1 min.)..... Line to ground: 2250 V/DC  
Line to line: 500 V/DC
- IR..... 50 M ohm @ 500 V/DC
- Operating conditions..... -25 °C to +85 °C, 0 - 85% RH
- Dimensions (L x W x H) (approx.)..... 75 x 51 x 37 mm

#### Electrical schematic



|         |              |
|---------|--------------|
| L1/2    | 2 x 0.6 mH   |
| Cx1/2/3 | 0.1 uF (X2)  |
| Cy      | 4700 pF (Y2) |
| R       | 2.2 M ohm    |

#### Insertion loss (in 50 ohm system)

