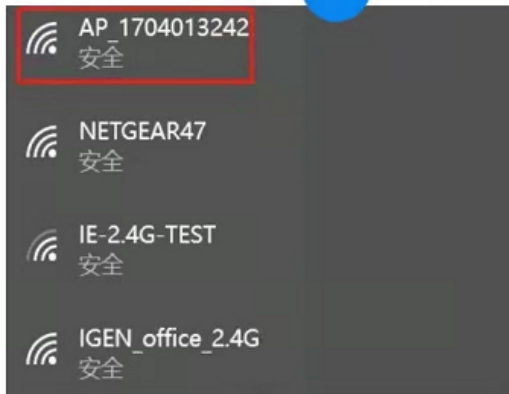


SolarMAN WIFI KIT Upgrade Procedures

1. Logon to the Web server and open **Upgrade** interface.

1. Open a wireless network.

2. Select logger network (network name: AP+SN) and connect. The password can be found on the logger label, which is the characters behind PWD.

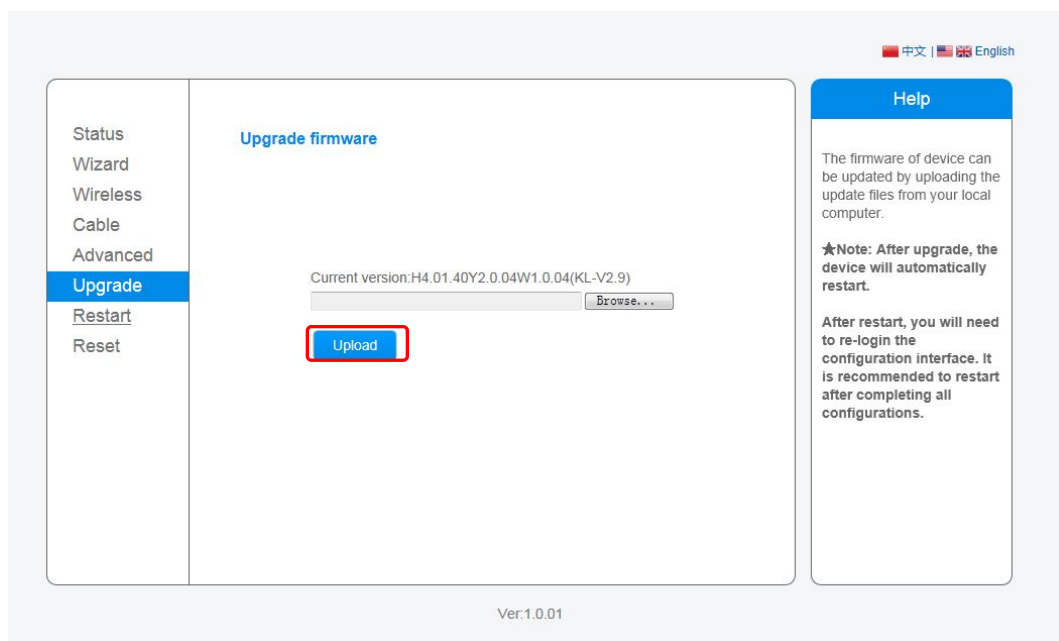


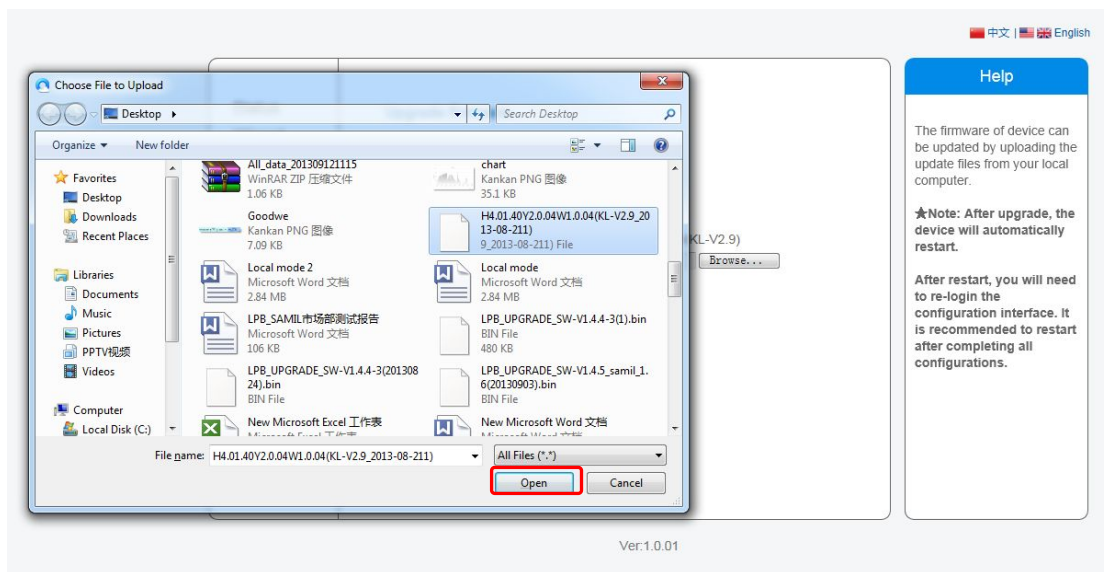
3. Open a browser and enter 10.10.100.254. Both username and password are admin.

(Recommended browser: IE 8+, Chrome 15+, Firefox 10+.)

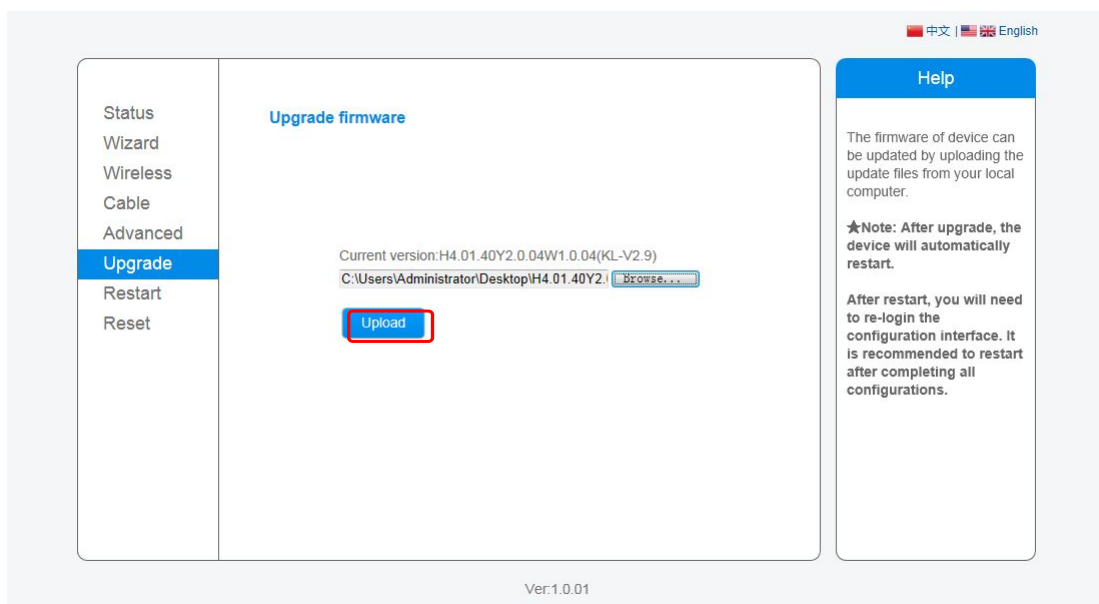


2. Click **Browse** to select the latest firmware file, then click **Open**



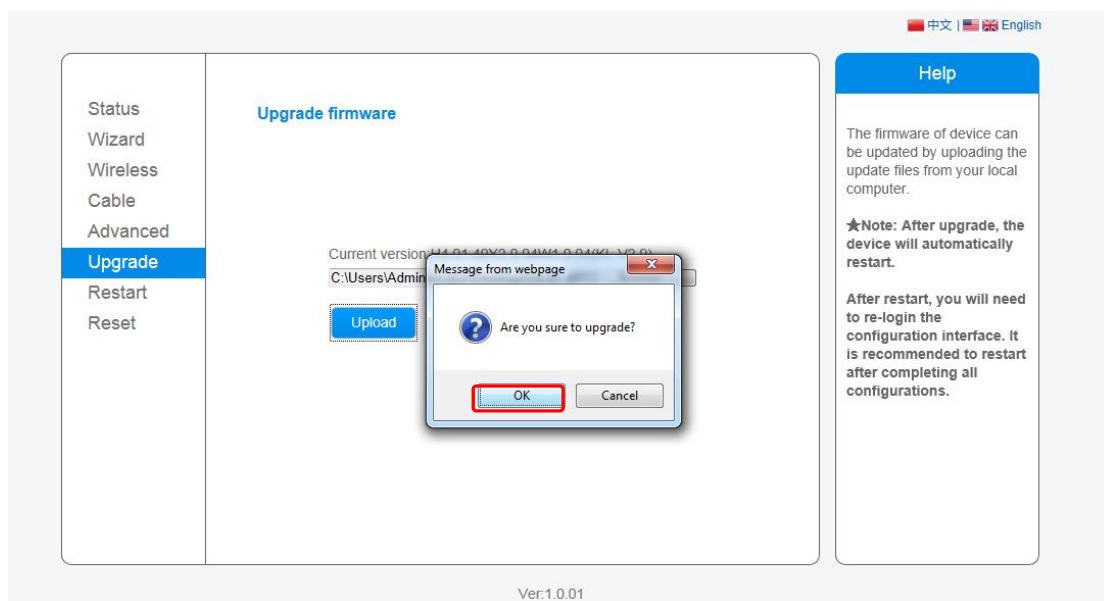


3. Click **Upload** after the file is selected.



4. Click **OK** to start upgrade

Notice: 1.The firmware upload should be operated during a shiny period among the day.
 2. During upgrade please make sure that the power and network connection between WIFI Kit and the router is stable, and the WIFI signal is constantly good.



5. The following page will display if firmware upgrade is successful.

